

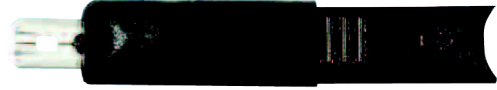
Technical Information Sheet

Part No. 082101

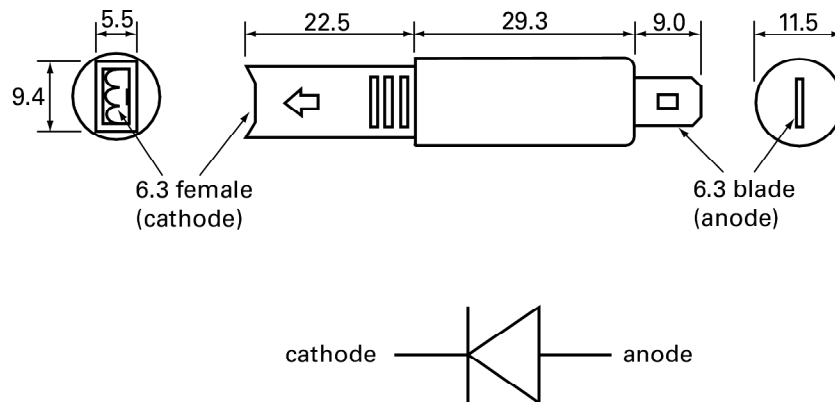
Universal in-line diode, 10 amp 50 volt dc, with male (-) and female (+) 6.30mm Lucar terminals.

Additional information

For current to flow the diode must be forward biased by connecting the anode to positive and cathode to negative.



Technical Drawing (not to scale)



Specification

Type	In-line silicon diode
Voltage	Max reverse voltage 50 volts Max forward voltage 0.9 volts
Current	Max forward current 10A Max leakage current <math><25\mu\text{A}</math>
Termination	Anode 6.3mm blade terminal Cathode 6.3mm female push-on terminal
Operating junction temp	-50° to +175°C (at 25°C ambient temp)
Case	Nylon 6.6
Weight	5g
Dimensions	See diagram